

CBI LESSON PLAN TEMPLATE

This is an example of a lesson plan template for facilitating meaningful Community-Based Instruction (CBI) sessions. Quality CBI lessons should occur in inclusive natural environments, focus on individual students' wants, needs, strengths, preferences, and culture, incorporate chronologically age-appropriate skills, reflect students' transition needs, and be informed by both ecological and student repertoire inventories (Bouck, Taber-Doughty, and Savage, 2015). Please note this does not apply to Work-Based Learning experiences which require individualized Student Training Plans.

CBI Session Information



Location:

Rationale:

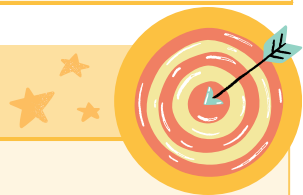
Schedule:

Mode of Transportation:

Budget Needed:

**Student/Staff
Assignments:**

Desired Results



Objective:

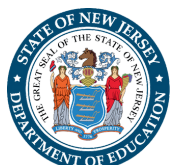
**Skills or IEP Goals
Addressed:**

**NJ Student Learning
Standards:**



RUTGERS HEALTH
The Boggs Center
on Disability and Human Development
Robert Wood Johnson Medical School

Developed by The Boggs Center on Disability and Human Development with the NJ Department of Education, Office of Special Education, funded by IDEA Part B 2024-2025. December 2024.



How will I teach to ensure my students learn?



Classroom procedures: *Identify how you will introduce skills and prepare students for the CBI session.*

Materials:

CBI procedures: *Identify the CBI location and authentic activities that will be done to practice skills in the community.*

Materials: *Include necessary materials (task analyses, ecological inventories, data sheets, etc.)*

Assessment Evidence



List performance assessments or other evidence you will employ and how they will be used to demonstrate the students' learning progress.