

8 YEARS OF NJLEND

FY17 - FY24

NJLEND is New Jersey's Leadership Education in Neurodevelopmental and Related Disabilities program at The Boggs Center on Disability and Human Development and is part of the national network of LEND programs. Begun in 2016, NJLEND has prepared future and practicing professionals and those with lived experience to work collaboratively in addressing the needs of children and adults with autism spectrum disorders (ASD) and related disabilities. This NJLEND snapshot provides an overview of the impact of the federal Autism CARES legislation in New Jersey – a state with one of the highest reported prevalence rates of ASD in the nation.

A COMMUNITY HEALTH PROGRAM OF RUTGERS

NJLEND is an interdisciplinary clinical leadership training program across Rutgers Health and Rutgers School of Arts and Sciences, working collaboratively with community partners: Children's Specialized Hospital, SPAN Parent Advocacy Network, Rutgers Douglass Developmental Disabilities Center, Rutgers Eagleton Institute of Politics, and NJ's Title V Program.



ENHANCING SCREENING, DIAGNOSIS, AND INTERVENTIONS FOR ASD

3,896



children in New Jersey screened for autism spectrum disorders and other developmental disabilities

134



training opportunities and community education events related to valid, reliable screening tools, valid diagnostic tools, and/or evidence-based interventions for ASD/DD

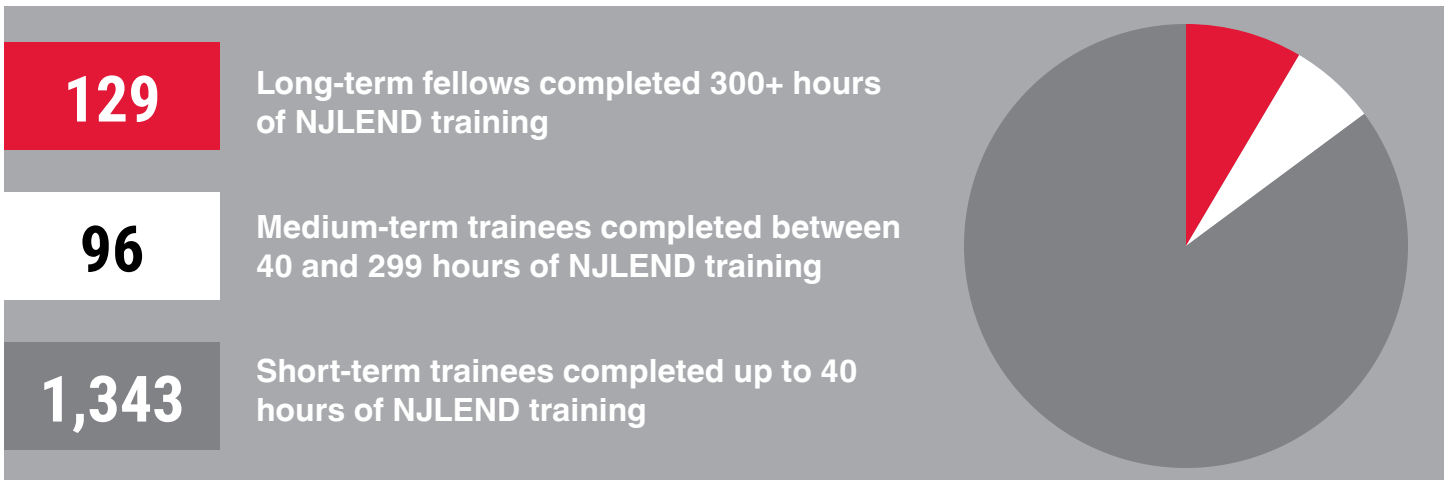


RUTGERS HEALTH

**The Boggs Center
on Disability and Human Development**

Robert Wood Johnson Medical School

INTERDISCIPLINARY TRAINING TO SUPPORT AUTISM ACROSS THE LIFESPAN



SHAPING LEADERSHIP TRAJECTORIES OF FUTURE PROFESSIONALS & ADVOCATES



“

My time as a LEND fellow was the highlight of my doctoral degree. The connections I made and the training I received were exceptional. The program has left an indelible impression on me, and will continue to influence my work throughout my career. I am grateful to all of the LEND leadership and collaborators for their time and expertise!

- NJLEND Nutrition Fellow

”

“

Participating in the NJLEND program during my medical education was a formative experience. The skills and knowledge I acquired continue to shape my learning experiences as a pediatric resident and my career goals as an aspiring developmental pediatrician. I am so grateful to have had the opportunity to learn from this wonderful program.

- NJLEND Medium Term Fellow

”

“

Being able to be a part of NJ LEND as a Family Fellow opened my eyes to see the professionals in a new light. Being a mom who has been through the system and has faced many difficulties due her children's medical disabilities and the systems negligence, the experience gave me a new perspective that I will always cherish. It helped me deal and process some emotions due to the medical and systematic trauma we faced as a family.

- NJLEND Family Fellow

”

CONTINUING EDUCATION

Since 2016, NJLEND has reached **6,141** people through **100 continuing education opportunities** for practicing maternal and child health professionals and families.



TECHNICAL ASSISTANCE

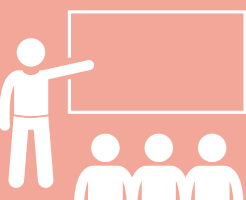
Since 2016, NJLEND faculty provided **712 hours of technical assistance** to improve systems of care, including consultation with and representation on:

- NJ FamilyCare Autism Stakeholder Executive Planning Committee
- NJ Medical Assistance Advisory Committee
- Infant Child Health Committee
- Governor's Council on the Prevention of Developmental Disabilities
- CSOC Birth to Five Steering Committee
- DBP Fellowship at Rutgers/Children's Specialized Hospital (CSH)
- CSH Scientific Advisory Committee

INFORMATION DISSEMINATION

Since 2016, NJLEND faculty have shared research findings and promoted best practice through:

251



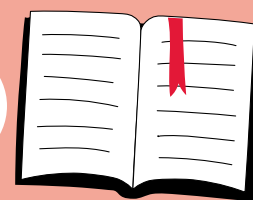
CONFERENCE PRESENTATIONS & POSTERS

142



PEER-REVIEWED PUBLICATIONS (PUBLISHED OR SUBMITTED)

17



BOOKS & BOOK CHAPTERS

NJLEND is a designation of the Maternal and Child Health Bureau, Health Resources and Services Administration (Grant #T73MC49337). This program is supported by the Health Resources and Services Administration of the U.S. Department of Health and Human Services (HHS) as part of an award totaling \$2.6 million with 0% financed with non-governmental sources. The contents are those of the author(s) and do not represent the official views of, nor an endorsement, by HRSA, HHS, or the U.S. Government. For more information, please visit [HRSA.gov](https://www.hrsa.gov).

Data included in this report reflect the time period between July 1, 2016 and June 30, 2024.

December, 2024



RUTGERS HEALTH
The Boggs Center
on Disability and Human Development
Robert Wood Johnson Medical School

Department of Pediatrics
Robert Wood Johnson Medical School
Rutgers, The State University of New Jersey
Liberty Plaza, 335 George Street
New Brunswick, NJ 08901

boggscenter.rwjms.rutgers.edu

p. 732-235-9300
f. 732-235-9330