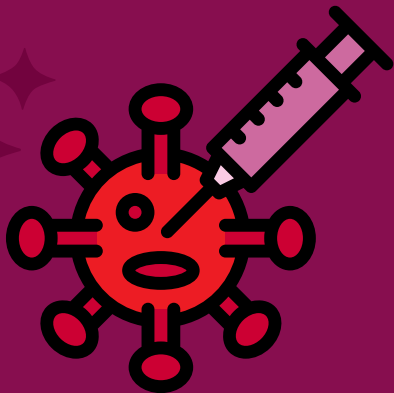


**REYALITE KONSÈNAN**

**VAKSEN YO**

**VAKSEN  
COVID-19**

**LA P AP FÈ W GEN  
COVID-19**



**Reyalite**

### **VAKSEN COVID-19 LA PA GEN VIRIS LA LADAN L**

Okenn nan vaksen yo otorize nan peyi a pa gen viris COVID-19 la ladan l. Etandone vaksen an pa gen viris lan vivan ladan l, li paka fè w gen COVID-19.



**Mit**

### **VAKSEN AN AP FÈ W GEN COVID-19**



**Pa kite w pran  
COVID-19 la.  
Pran vaksen yo  
pi bonè posib!**

Sous:  
National Center for Immunization and Respiratory Diseases. (15 septanm 2021). Interim clinical considerations for use of covid-19 vaccines. Appendix C: Ingredients included in COVID- 19 vaccines. Centers for Disease Control and Prevention. Yo te konsilte l 20 septanm 2021, sou <https://www.cdc.gov/vaccines/covid-19/clinical-considerations/covid-19-vaccines-us.html#Appendix-C>

Preparasyon resous sa fèt gras ak yon sibvansyon #90DDUC0036-05-00 ki soti nan U.S. Department of Health & Human Services, Administration for Community Living, Administration on Intellectual and Developmental Disabilities. Desanm 2021.

Se The Boggs Center on Developmental Disabilities, Rutgers Robert Wood Johnson Medical School ki fè l, 335 George Street, New Brunswick, NJ 08901 · [rwjms.rutgers.edu/boggscenter](http://rwjms.rutgers.edu/boggscenter) · 732-235-9300